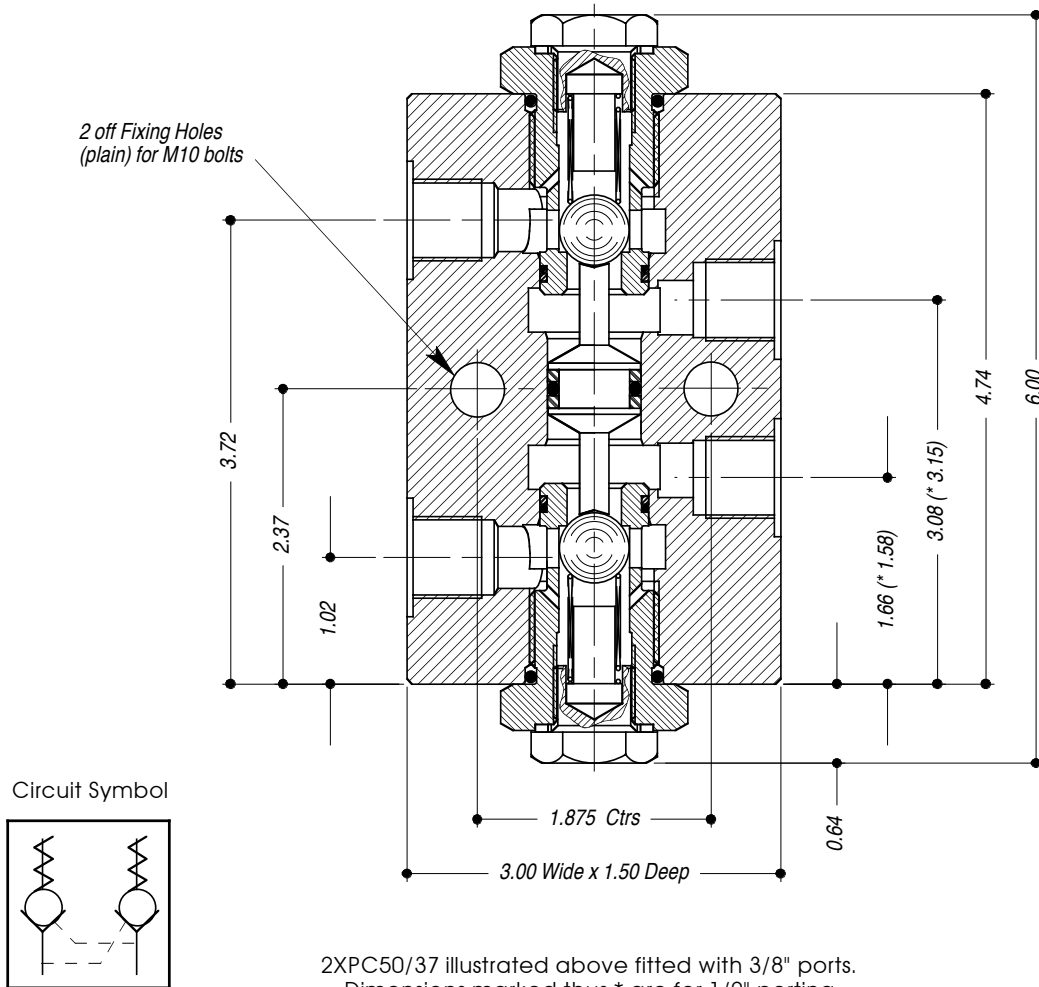


# DOUBLE PILOT OPERATED CHECK VALVE

TYPES: **2XPC50/37, 2XPC50**



- STAINLESS STEEL (316 / 1.4404)
- SUITABLE FOR LIQUID USE.
- ALL DIMENSIONS IN INCHES.



2XPC50/37 illustrated above fitted with 3/8" ports.  
Dimensions marked thus \* are for 1/2" porting

TECHNICAL SPECIFICATION			ORDERING EXAMPLE
Valve Type:	<b>2XPC50/37</b>	<b>2XPC50</b>	<b>2XPC50</b>
Porting / Connection Options:	<b>C5</b> = CETOP5 <b>P</b> = BSP (Parallel) <b>N</b> = NPT (Taper)		<b>P</b>
Max. Working Press: Liquid	<b>6,000 psi</b>		<b>6K</b>
Pilot Ratio:	2.9 : 1		
Port Size:	3/8"	1/2"	
Valve Seat Mat'l: Liquid	Stainless Steel - 316/1.4404		
Seal Material:	Viton (other materials available by request)		
CV Value:	1.9		
Dry Weight: (kg)	2.77		
Working Temperature Range:	-10°C to +120°C		